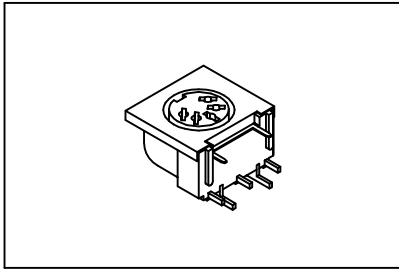


4004 Series

Circular Din Jack Right Angle P.C.B Mount Type

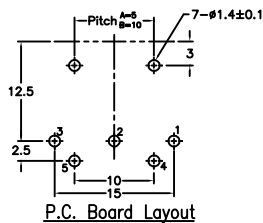
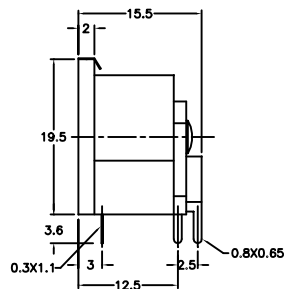
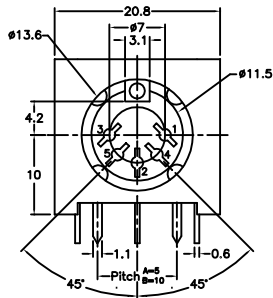


Material:

Housing: 15% Glass filled PBT UL94V-0.
Contacts: Brass, Tin Plated.
Ground: Brass, Nickel Plated.
Shielded: Brass, Nickel Plated.

Electrical Characteristics:

Current Rating: 1 AMP.
Insulator Resistance: 100M Ω min. at DC 500V.
Contact Resistance: 20m Ω max.
Operating Temperature: -55°C~+105°C.
Insertion Force: 0.5~5.0Kg.
Withdrawal Force: 0.4~5.0Kg.
Durability Test: 5000 mating cycles min.



Ordering information

4004- 5 A
 Series Position 5 A: Foot Print 5.0mm
 B: Foot Print 10.0mm